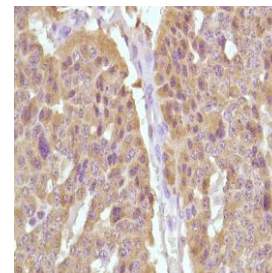




## Rabbit Anti-Human Calcitonin Monoclonal Antibody (Clone SP17)

**CATALOG #:**

- M3170** 0.1 ml rabbit monoclonal antibody supplied as tissue culture supernatant in TBS/1% BSA buffer pH 7.5 with less than 0.1% sodium azide.
- M3172** 0.5 ml rabbit monoclonal antibody supplied as tissue culture supernatant in TBS/1% BSA buffer pH 7.5 with less than 0.1% sodium azide.
- M3174** 1.0 ml rabbit monoclonal antibody supplied as tissue culture supernatant in TBS/1% BSA buffer pH 7.5 with less than 0.1% sodium azide.
- M3171** 7.0 ml pre-diluted rabbit monoclonal antibody supplied as tissue culture supernatant in TBS/1% BSA buffer pH 7.6 with less than 0.1% sodium azide.



*Human thyroid medullary carcinoma stained with anti-calcitonin antibody*

**INTENDED USE:**

For Research Use Only. Not for use in diagnostic procedures.

**CLONE:**

SP17

**IMMUNOGEN:**

Synthetic human calcitonin 1-32 amino acid peptide.

**IG ISOTYPE:**

Rabbit IgG

**EPITOPE:**

Not determined

**MOLECULAR WEIGHT**

15kDa

**SPECIES REACTIVITY:**

Human (tested). (See [www.springbio.com](http://www.springbio.com) for information on species reactivity predicted by sequence homology.)

**DESCRIPTION:**

Calcitonin is a 32 amino acid peptide which can be demonstrated in C cells of the normal and hyperplastic thyroid. Staining for calcitonin may be used for the identification of a spectrum of C cell proliferative abnormalities ranging from C cell hyperplasia to invasive tumors. Staining for calcitonin in medullary carcinoma of the thyroid produces a fine granular pattern in the cytoplasm. Amyloid deposits within the tumor may also exhibit varying degrees of calcitonin activity.

**APPLICATIONS:**

Immunohistochemistry (IHC)

**IHC PROCEDURE:**

**Specimen Preparation:** Formalin-fixed, paraffin-embedded tissues are suitable for use with this primary antibody.

**Deparaffinization:** Deparaffinize slides using xylene or xylene alternative and graded alcohols.

**Antibody Dilution:** If using the concentrate format of this product, dilute the antibody 1:100. The dilutions are estimates; actual results may differ because of variability in methods and protocols.

**Antigen Retrieval:** None

**Primary Antibody Incubation:** Incubate for 30 minutes at room temperature.

**Slide Washing:** Slides must be washed in between steps. Rinse slides with PBS/0.05% Tween.

**Visualization:** Detect the antibody as instructed by the instructions provided with the visualization system.

**POSITIVE CONTROL:**

Thyroid medullary carcinoma

**CELLULAR LOCALIZATION:**

Cytoplasm

**STORAGE & STABILITY**

Store at 2-8°C. Do not freeze. The user must validate any other storage conditions. When properly stored, the reagent is stable to the date indicated on the label. Do not use the reagent beyond the expiration date.

There are no definitive signs to indicate instability of this product; therefore, positive and negative controls should be tested simultaneously with unknown specimens.

If unexpected results are observed which cannot be explained by variations in laboratory procedures and a problem with the reagent is suspected, contact Technical Support at [spring.tech@ventana.roche.com](mailto:spring.tech@ventana.roche.com).

**WARNINGS & PRECAUTIONS:**

1. Avoid contact of reagents with eyes and mucous membranes. If reagents come into contact with sensitive areas, wash with copious amounts of water.
2. This product is harmful if swallowed.
3. Consult local or state authorities with regard to recommended method of disposal.
4. Avoid microbial contamination of reagents.